

APPLICATION :

This mechanical load cell has been specially designed to be incorporated into a kinematic line and to give an audible alarm in case of over load. The load cell is equipped with a 90 db buzzer that warn the user of a hazard situation.

e.g. :

For lifting : Overload control for manual hoists.

For suspension : Overload control on anchor points specially in stage or theatre installations.

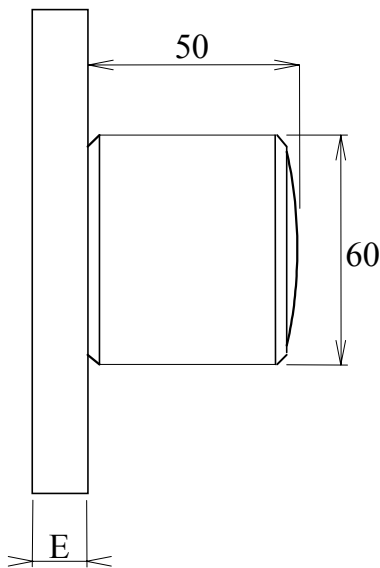
For traction : Overload control for hoists such as Tirfor.

With appropriate shackles, this load cell is easily incorporated into almost any kind of existing lifting system.

OPERATING PRINCIPLE :

The load cell operates by the movement of metal within its elastic limits.

This movement acts on an adjustable high precision microswitch giving an "all or nothing" signal able to start the integrated alarm.



TECHNICAL SPECIFICATIONS:

Capacity : see table below .

Safety coefficient : 5

Overload coefficient : 2

Measuring device : High precision microswitch.

Adjustment : by fine thread screw.

Hystérésis (ON / OFF / ON) : 20 daN

Temperature range : from - 30 to 80 °C

Power supply : 9 Vdc battery

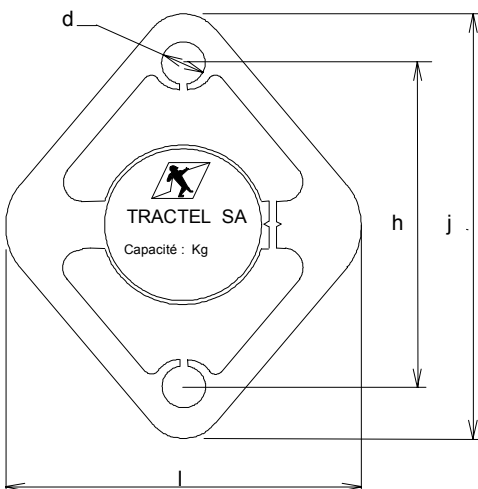
Working time range : 90 h in continuos alarm condition.

Test : battery test button.

Material : Stainless steel (cell) Aluminium (alarm)

Protection : IP 54

MODELS AND DIMENSIONS :



Code	Models	Cap.maxi daN	Dimensions in mm				
			d	h	j	l	E
38578	HF 05/1/Au	500	12	100	124	100	16
38588	HF 05/2/Au	1250	12	100	124	100	16
38598	HF 05/3/Au	2000	16	100	124	106	16
38608	HF 05/4/Au	3200	20	105	134	108	20
38618	Alarm spare part		Ø 60 mm		H 50 mm		